

THE OAKLEAF



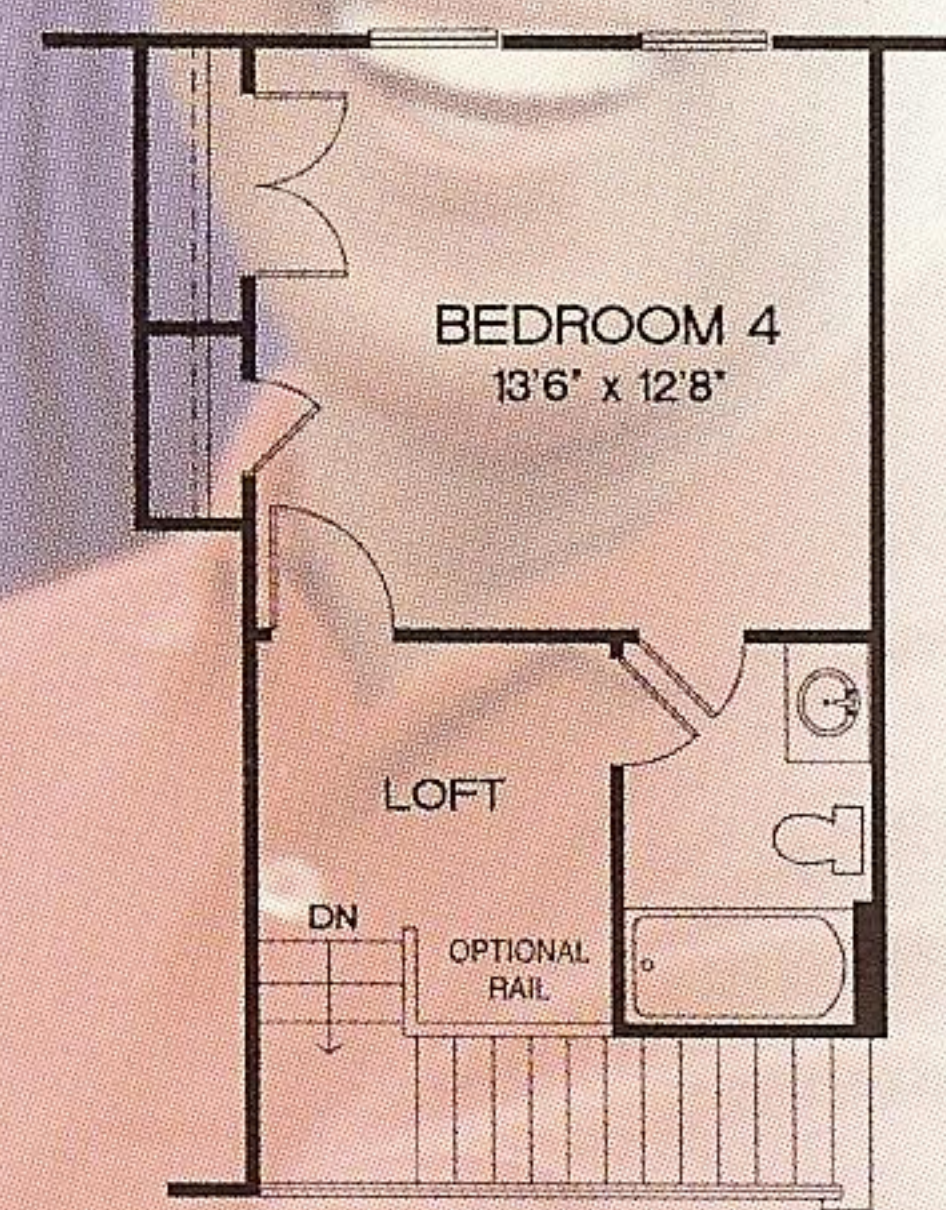
Elevation A



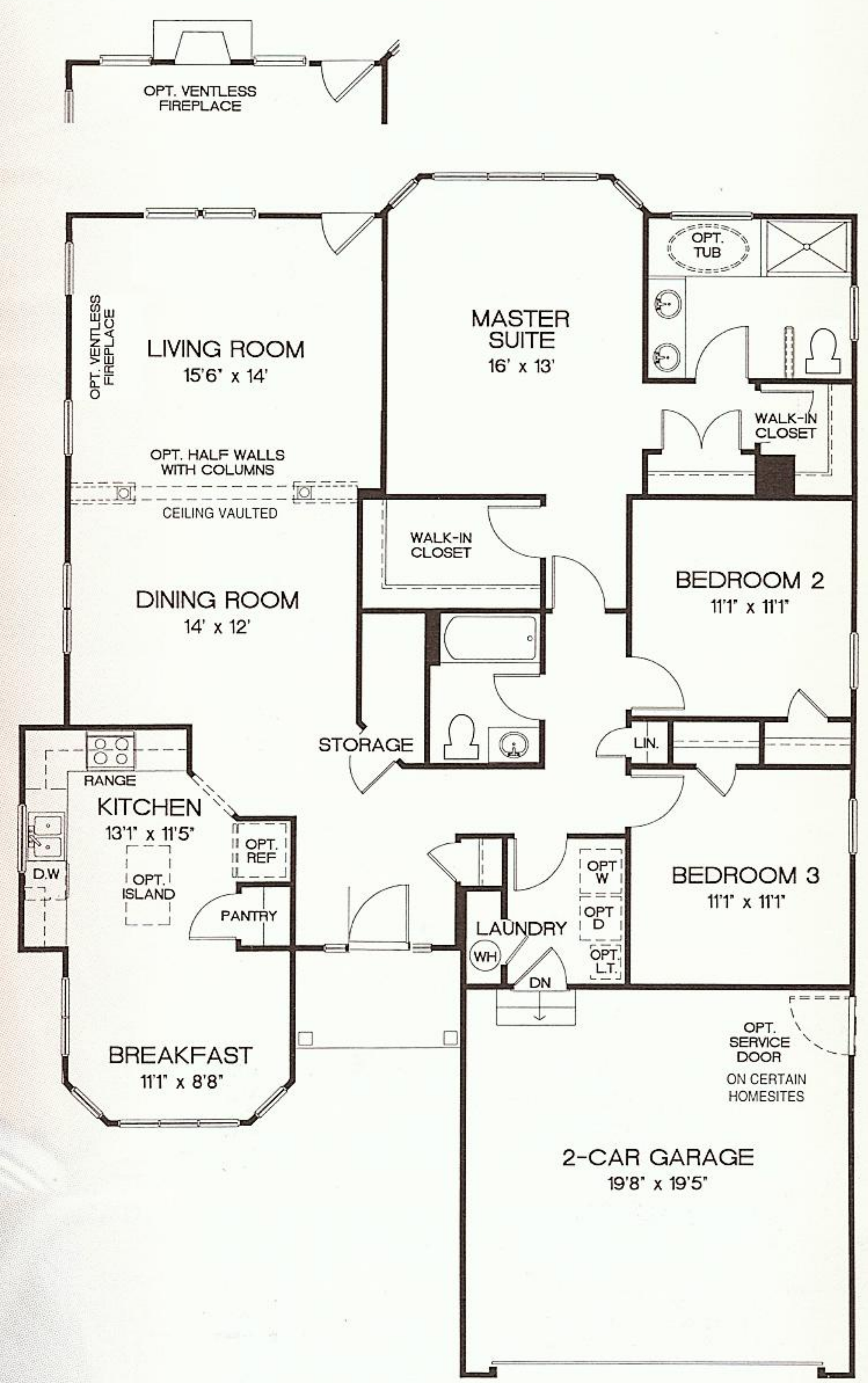
Elev. B - shown with optional full stone finish



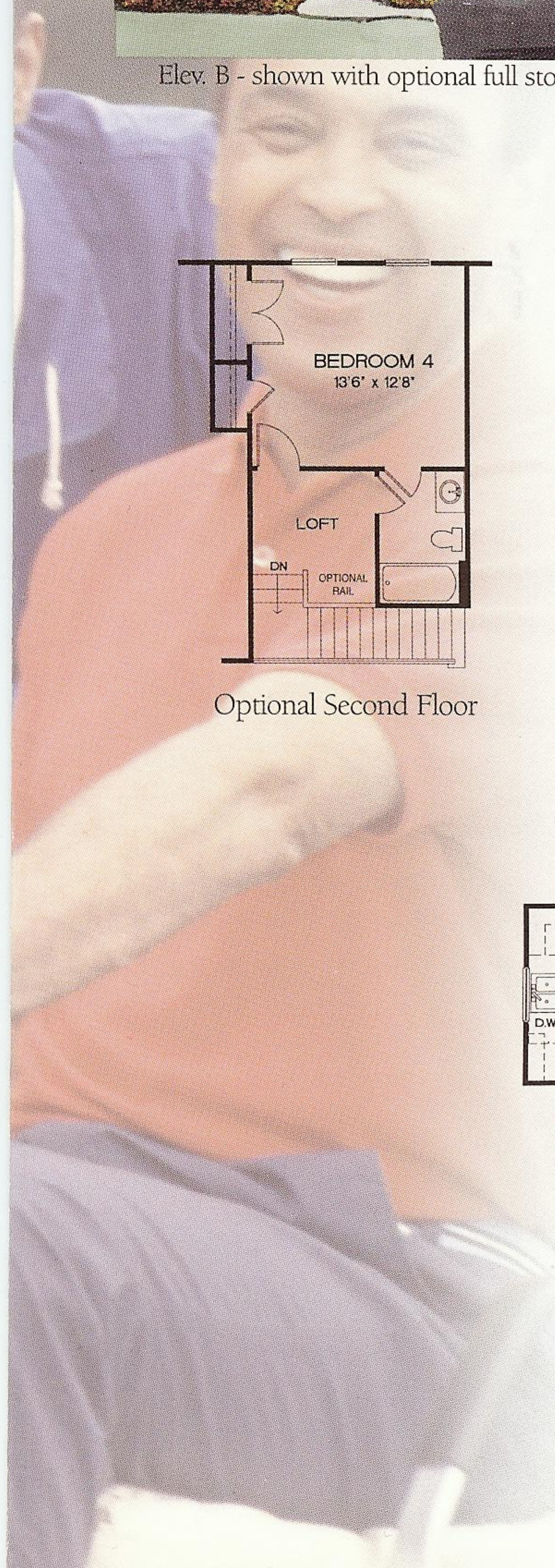
Elev. C - shown with optional full brick finish



Optional Second Floor



Main Floor



THE GARDEN COLLECTION

The traditional and the up-to-the-minute come together in elegant single-family homes built with one-story living in mind. Heritage Hunt's Garden Collection of homes boasts 1500 - 2600 square feet with basements. Open, light-filled floorplans, top-choice standard features, fine architectural touches which may include tray ceilings, plant shelves and free-standing columns are only the start. Options include the ability to expand to the upper floors with lofts and bedrooms.

EXCEPTIONAL FEATURES

DISTINCTIVE EXTERIORS

- Standard homesite approximately 7,900 square feet
- Variety of exterior elevations
- Professionally coordinated exterior color schemes
- Maintenance-free vinyl siding
- Maintenance-free vinyl soffits
- 25-year fiberglass roof shingles
- Therma-Tru™ Fiberclassic six-panel insulated fiberglass front entry door
- Weiser™ brass front entry door handle set with Brilliance™ finish
- Lighted front door chime
- Vinyl tilt-out double hung windows
- Raised panel garage door with lights, automatic opener and remote controls
- Designer exterior post light

IMPRESSIVE INTERIORS

- Selection of Armstrong no-wax vinyl flooring in foyer, kitchens, baths & laundry rooms
- World™ brand wall-to-wall carpeting throughout
- Convenient interior laundry room (where shown)
- Prewired for 3 telephone outlets
- Prewired for 3 cable TV outlets
- Progress™ light fixtures and custom recessed lighting
- 9' ceilings throughout main level accented by coffered and vaulted ceilings (where shown)
- Weiser™ brass lever interior door hardware
- Comcast Communication package (telephone and cable TV)
- Vinyl coated dustless wire closet shelving
- Latex acrylic exterior paint with semi-gloss enamel on doors and trim

CONTEMPORARY KITCHENS

- Selection of Merillatt furniture finished cabinetry
- Choice of easy-to-maintain Formica laminate countertops
- GE appliances including multi-cycle dishwasher and self-cleaning gas oven and range
- Heavy duty Insinkerator™ waste disposal
- Single lever Moen™ faucet
- Water line for refrigerator ice maker
- Recessed ceiling task lighting

LUXURIOUS BATHROOMS

- Cultured marble vanity tops with integral cultured marble sinks
- Tempered glass shower enclosure in master bath
- Moen™ plumbing fixtures
- Grab bars in bathtubs

QUALITY CONSTRUCTION

- 2x4 exterior frame construction
- Engineered steel reinforced concrete foundation
- 2-10™ Home Buyers Warranty
- 200 amp electric service with copper wiring for 110V and 220V circuits
- Rapid recovery 50-gallon hot water heater
- Copper water lines below the slab are seamless and without joints

CONVENIENCE APPOINTMENTS

- All utility lines within community are underground
- Recessed compartment box for washing machine water and drain lines
- Bathroom exhaust fans (where shown)
- Two-car garages (where shown)
- Front and rear hose bibs
- Front and rear exterior electrical outlets

SAFETY FEATURES

- Weiser™ deadbolt security lock on front door
- Advanced warning hard-wired smoke detectors
- TV monitor to front entrance gate of community
- Sump crock (in basements)
- Front and rear exterior electrical outlets
- 24-hour manned entrance gate to community

ENERGY EFFICIENCY

- R13 fiberglass batt insulation in exterior walls
- R30 fiberglass batt and blown insulation in ceiling
- Double-pane, thermal break vinyl windows
- Energy-efficient gas heat and cooking